

# JVC

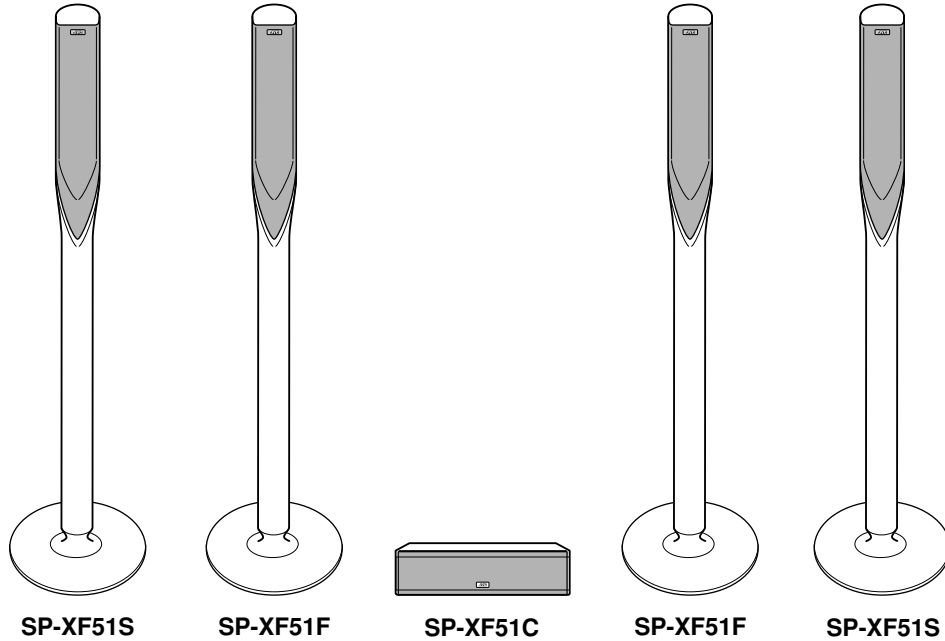


## SATELLITE SPEAKER SYSTEM

卫星扬声器系统

نظام سماعة ستالايت

# SP-XF51



## INSTRUCTIONS

使用说明书

دليل التعليمات

## English

Thank you for purchasing JVC speakers.  
Before you begin using them, please read the instructions carefully.

### Contents

Checking the Components .....	3
Warnings, Cautions and Others .....	3
Installing the speakers on the wall .....	3
Assembling the front and surround speakers .....	4
Connections .....	4
Specifications .....	5

## 中文

感谢您购买 JVC 扬声器系统。  
开始使用扬声器之前，请仔细阅读本使用说明书。

### 目录

检查附件 .....	6
警告、注意及其他 .....	6
将扬声器安装在墙上 .....	6
组装前置和环绕扬声器 .....	7
连接 .....	7
规格 .....	8

## عربي

شكرا على شراء سماعة JVC.  
قبل البدء باستعمل هذه السماعة، يرجى قراءة دليل التعليمات بعناية.

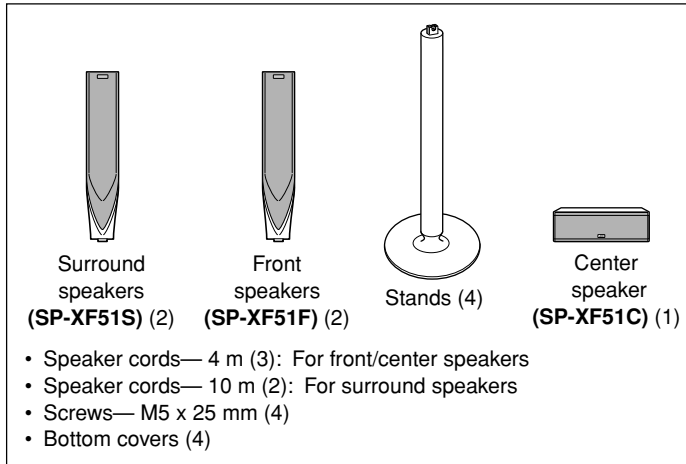
### المحتويات

11 .....	التأكد من المركبات المزودة
11 .....	تحذيرات، تنبيهات واشياء اخرى
11 .....	تركيب السماعات على الجدار
10 .....	تجميع السماعات الامامية و سماعات الصوت المحيط
10 .....	التوصيل
9 .....	المواصفات

## Checking the Components

Check to be sure you have the following components. The number in parenthesis indicates the quantity of the piece supplied.

- **Check the model name of each speaker printed on the label on the rear to locate each speaker correctly.**



If any of the items above is missing, contact your dealer immediately.

## Warnings, Cautions and Others

### ■ Precautions for installation

- Do not install the speakers on an uneven surface or in a place subject to vibration; otherwise, they may fall over, causing damage or injury.
- **The front and center speakers** are magnetically shielded to avoid color distortions on TVs. However, if not installed properly, they may cause color distortions. So, pay attention to the following when installing the speakers.
  - When placing the speakers near a TV set, turn off the TV's main power switch or unplug it before installing the speakers. Then wait at least 30 minutes before turning on the TV's main power switch again.
 Some TVs may still be affected even though you have followed the above. If this happens, move the speakers away from the TV.
- **The surround speakers** are not magnetically shielded. If it is located nearby the TV or monitor, it will probably cause color distortion on the screen. To avoid this, do not place the speaker nearby the TV or monitor.

### ■ Precautions for daily use

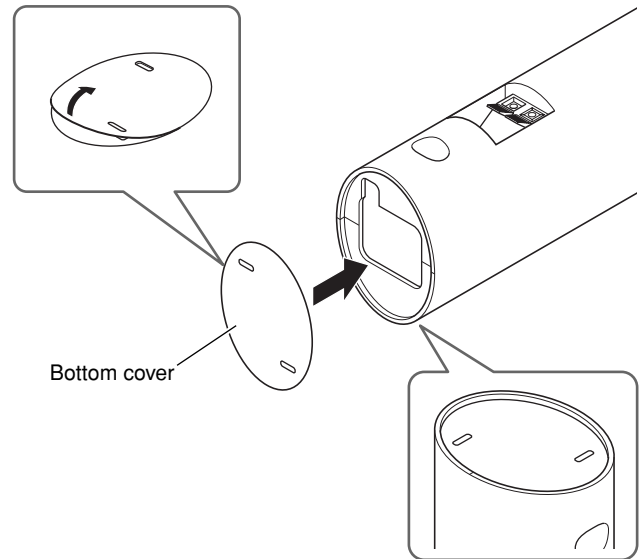
- Do not reproduce sounds at so high a volume that they are distorted; otherwise, the speakers may be damaged by internal heat buildup.
- When moving the speakers, do not pull the speaker cords; otherwise, the speakers may fall over, causing damage or injury.
- When holding a speaker, always grasp the lower portion.
- Do not lean against the speakers, as the speakers could fall down or break, possibly causing an injury. Especially be careful that children do not lean against them.

## Installing the speakers on the wall

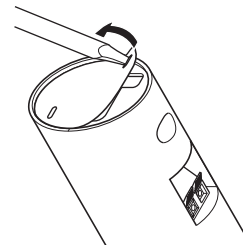
The speakers can also be attached on the wall. **The front and surround speakers** do not need stands when assembled on the wall.

- Be sure to have the speakers installed on the wall by a qualified personnel to avoid unexpected damage from falling off the wall due to incorrect installation or weakness in the wall structure.
- Care must be taken in selecting the location of installation on the wall. Injuries or damages may result if the speakers installed interfere with daily activities.

**When installing the front and surround speakers on the wall, attach the supplied bottom cover on the bottom of each speaker as illustrated.**



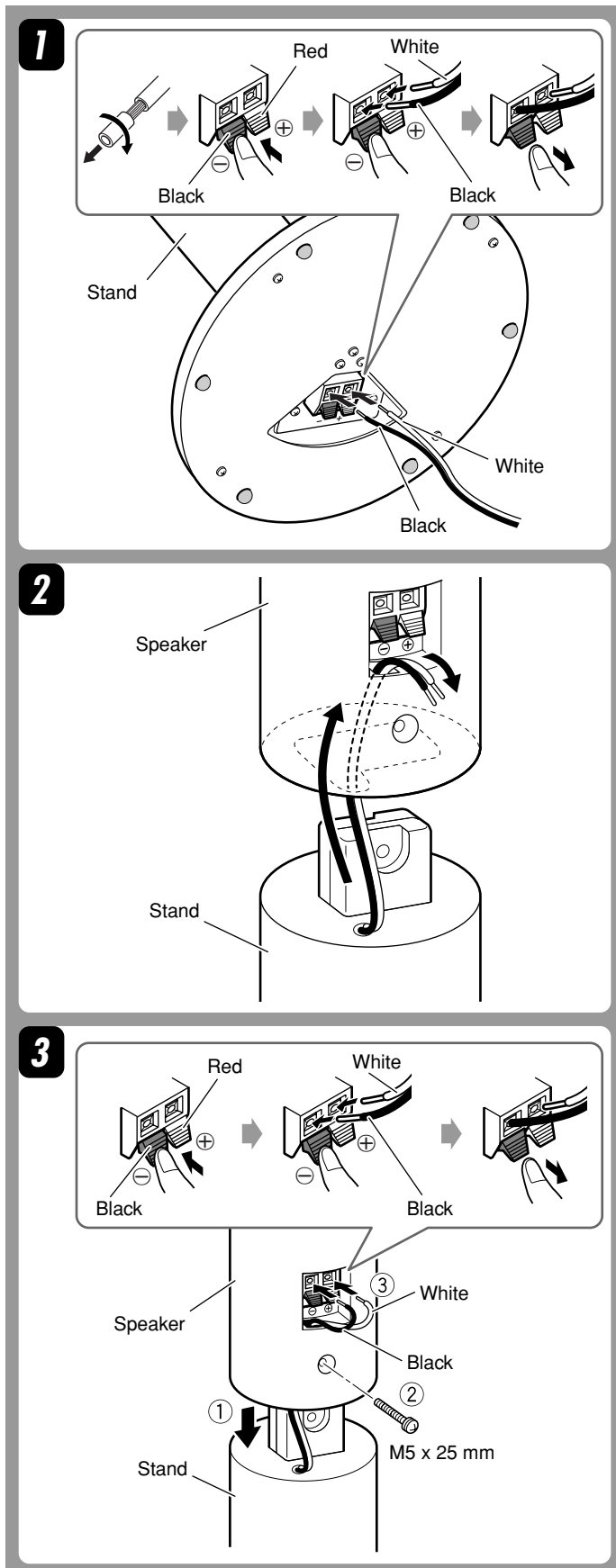
If attaching the stand to the speaker, remove the bottom cover by inserting a flat-pointed tool into the hole of the bottom cover.



## Assembling the front and surround speakers

### Before assembling:

- Prepare a Philips screwdriver (not supplied).
- Take care not to drop any component part while assembling; otherwise, it may cause damage to the floor or injury.



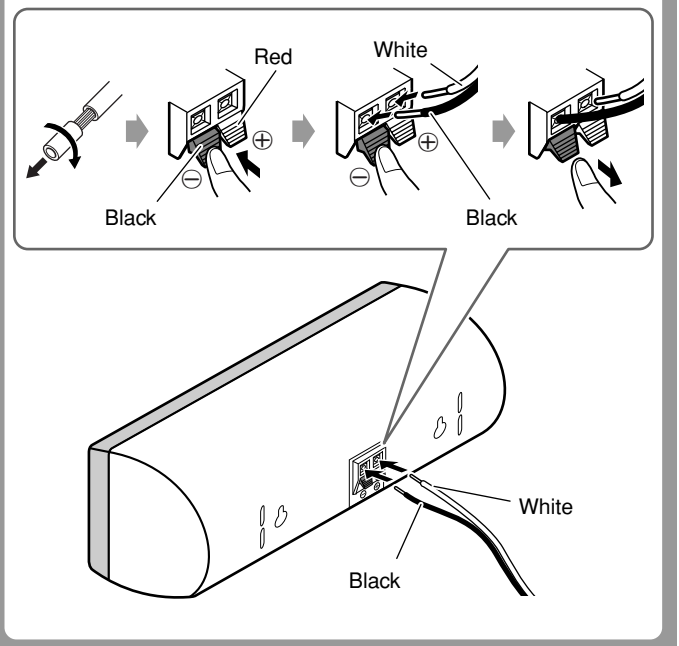
## Connections

### ■ Connecting the speaker system to the amplifier

#### Before connecting:

- Turn off the power to the amplifier before connecting the speaker system; otherwise, the speakers may be damaged.
- The impedance of each speaker is 6  $\Omega$ .  
If this does not match with the speaker impedance range indicated on the amplifier, you cannot connect this system to the amplifier.
- The maximum power handling capacity of the SP-XF51 is 100 W. Excessive input will result in abnormal noise and possible damage.
- Be sure to turn down the volume level on the amplifier to prevent unwanted noise before performing following operations:
  - Turning on or off other components
  - Operating the amplifier
  - Tuning FM stations
  - Fast-forwarding a tape
  - Continuously reproducing high frequency oscillation or high pitch electronic sounds
  - Connecting or disconnecting a microphone
- When using a microphone, do not aim it at the speakers or use it near the speakers; otherwise, the howling which occurs may damage the speakers.
- Before replacing the cartridge, always turn off the power both to the amplifier and to the turntable; otherwise, the clicking noise may damage the speakers.

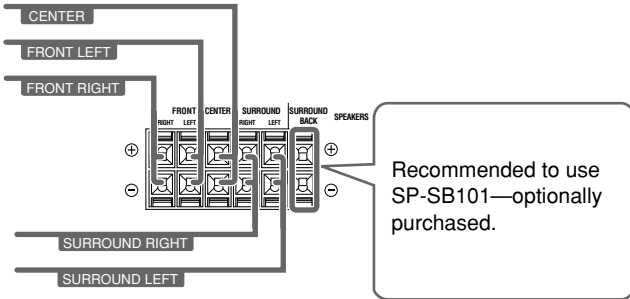
### ■ Connecting the Center speaker



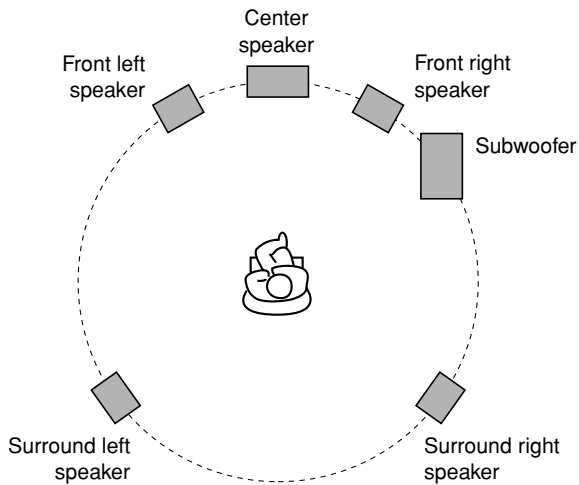
### Typical connection method to an amplifier

Connect the speakers to the speaker terminals of the amplifier with the speaker cords by referring to the diagram below.

- Make sure to match the polarity ( $\oplus$  and  $\ominus$ ) when connecting the speaker cords.
- The diagram below is an example of a typical connection.



### Speaker layout



## Specifications

### SP-XF51F (Front speakers)

Type:	2-way 3-speaker Bass reflex type (Magnetically-shielded type)
Speaker unit:	5.5 cm cone (x 2), 1.5 cm dome
Frequency range:	90 Hz to 20 000 Hz
Impedance:	6 $\Omega$
Power handling capacity:	100 W
Sound pressure level:	79 dB/W•m
Dimensions:	250 mm (W) x 1104 mm (H) x 250 mm (D)
Mass:	2.6 kg each

### SP-XF51S (Surround speakers)

Type:	2-way 3-speaker Bass reflex type (Magnetically-shielded type)
Speaker unit:	5.5 cm cone (x 2), 1.5 cm dome
Frequency range:	90 Hz to 20 000 Hz
Impedance:	6 $\Omega$
Power handling capacity:	100 W
Sound pressure level:	78 dB/W•m
Dimensions:	250 mm (W) x 1104 mm (H) x 250 mm (D)
Mass:	2.5 kg each

### SP-XF51C (Center speaker)

Type:	2-way 3-speaker Bass reflex type (Magnetically-shielded type)
Speaker unit:	5.5 cm cone (x 2), 1.5 cm dome
Frequency range:	90 Hz to 20 000 Hz
Impedance:	6 $\Omega$
Power handling capacity:	100 W
Sound pressure level:	81 dB/W•m
Dimensions:	320 mm (W) x 75 mm (H) x 92 mm (D)
Mass:	0.9 kg



# JVC